

Connector

Connector.sch

Out1

Out2

Output1

Output2

Oscillator1

Output

Oscillator.sch

Oscillator2

Output

Oscillator.sch

PowerPins

PowerPins.sch

Sembazuru Circuits



Sample Hierarchial Schematic Project (5.0.1-4)

Sheet: /

File: KiCad5TestNewHierarchical.sch

Title: Dual Square Wave Generator

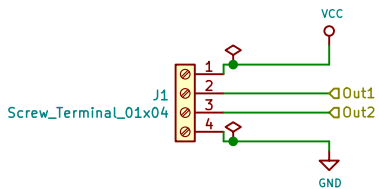
Size: User

Date: 2018-11-21

Rev: 1.0.0

KiCad E.D.A. kicad (6.0.0-rc1-dev-1238-gae6989f3a)

Id: 1/7



Sample Hierarchial Schematic Project (5.0.1-4)

Sheet: /Connector/

File: Connector.sch

Title: Dual Square Wave Generator

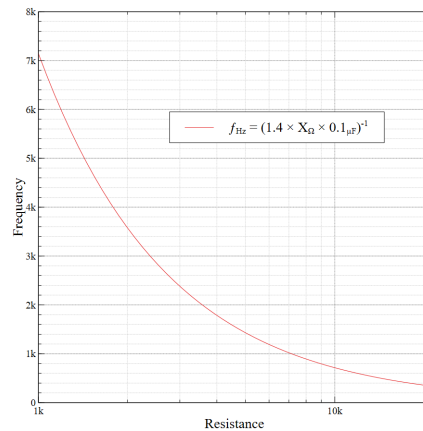
Size: User

Date: 2018-11-21

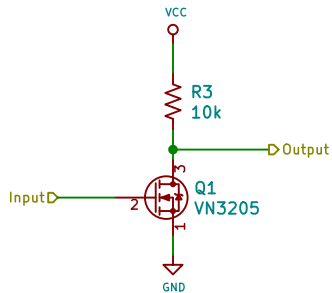
Rev: 1.0.0

KiCad E.D.A. kicad (6.0.0-rc1-dev-1238-gae6989f3a)

Id: 2/7



Id: 3/7



Sample Hierarchial Schematic Project (5.0.1-4)

Sheet: /Oscillator1/Driver/

File: Driver.sch

Title: Dual Square Wave Generator

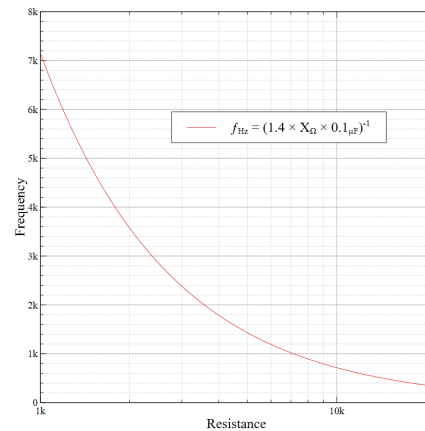
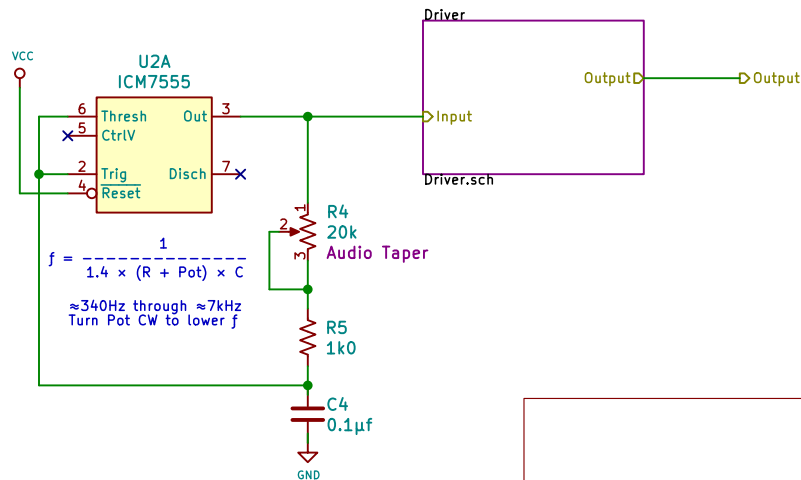
Size: User

Date: 2018-11-21

Rev: 1.0.0

KiCad E.D.A. kicad (6.0.0-rc1-dev-1238-gae6989f3a)

Id: 4/7



Sample Hierarchial Schematic Project (5.0.1-4)

Sheet: /Oscillator2/

File: Oscillator.sch

Title: Dual Square Wave Generator

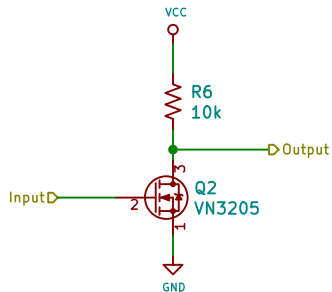
Size: User

Date: 2018-11-21

Rev: 1.0.0

KiCad E.D.A. kicad (6.0.0-rc1-dev-1238-gae6989f3a)

Id: 5/7



Sample Hierarchial Schematic Project (5.0.1-4)

Sheet: /Oscillator2/Driver/

File: Driver.sch

Title: Dual Square Wave Generator

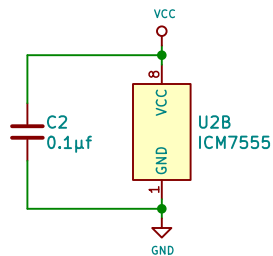
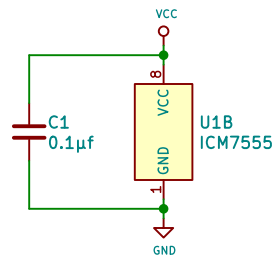
Size: User

Date: 2018-11-21

Rev: 1.0.0

KiCad E.D.A. kicad (6.0.0-rc1-dev-1238-gae6989f3a)

Id: 6/7



Sample Hierarchial Schematic Project (5.0.1-4)

Sheet: /PowerPins/

File: PowerPins.sch

Title: Dual Square Wave Generator

Size: User

Date: 2018-11-21

Rev: 1.0.0

KiCad E.D.A. kicad (6.0.0-rc1-dev-1238-gae6989f3a)

Id: 7/7